



KING DAVID

ARIEL

Confidence. Character. Community



WELCOME TO KING DAVID ARIEL

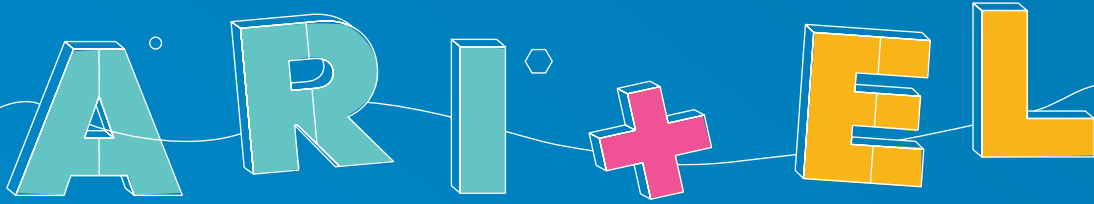
King David Ariel opened in January 2018 on the beautiful King David Victory Park campus and is a state-of-the art school dedicated to excellence in remedial education for Grade 1 through to Grade 7.

We offer specialized facilities and a top remedial education in addition to all the benefits of a King David School. These include Hebrew and Jewish Studies, davening, chaggim, sports, shared assemblies, resources and sporting activities.

A King David Ariel student will benefit from personalised learning, individual attention, top remedial teachers, in-house therapies and a sense of community, Jewish identity and belonging that comes with being part of the King David family.

King David Ariel is ideal for children who experience one or more barriers to learning, who require individual support and who will ultimately be able to enter the mainstream system, with confidence, character and a strong sense of community.

WHY ARE WE CALLED KING DAVID ARIEL?



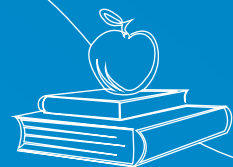
Ari:

The Hebrew word for lion; our students exhibit courage and the tenacious desire to succeed.

EI:

One of G-d's names indicating strength. We draw on our Jewish heritage to build a strong & caring learning community.

ADMISSION REQUIREMENTS



Suitability of children for admission is determined following a considered review of a multi-disciplinary assessment portfolio.

Standardised assessment reports from Educational Psychologists, Speech-Language Therapists, Occupational Therapists, Medical Practitioners, current schools, and Learner Support Educators will be considered.

Please contact Belinda Urdang for specific application requirements: urdangb@sabje.co.za

RABBI RICKY SEEFF

**GENERAL DIRECTOR OF THE SOUTH AFRICAN
BOARD OF JEWISH EDUCATION (SABJE)**

King David Schools have been the cornerstone of the Johannesburg Jewish Community for over 7 decades. Our Schools provide a world-class, forward thinking, general and Jewish education, that is globally recognized. Each of our 11 schools has a unique culture and personality, but share a golden thread of excellence in academics, sport, arts, culture, outstanding infrastructure, Zionist values, a love of Torah and a community network which stays with Davidians for a lifetime.

We are proud to have King David Ariel as the newest jewel in our crown - delivering excellence in remedial education with all the benefits of a King David Jewish education.

As the world around us changes and the need for a more progressive education becomes apparent, King David Schools are committed to ensuring that King David Ariel takes its proud legacy for excellence into the future with the necessary resources, facilities, and curriculum.

The vision of founding Principal Sally Ann Knowles and her team of teachers, therapists and support staff is inspiring with its balance of deep social and emotional learning and future focused skills. This vision will undoubtedly propel this superb school into the 21st century, providing a remedial education that prepares the students for a mainstream environment with the skills and determination to accomplish their dreams.

SALLY ANN KNOWLES

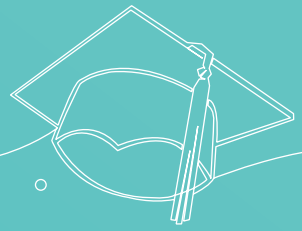
PRINCIPAL

Our holistic, nurturing environment fosters personalised learning, by way of a scaffolded curriculum taught by a passionate, dedicated team of remedial educators. Students' individual needs are further supported by our multi-disciplinary team of therapists – headed by an Educational Psychologist/Clinical Director, and in partnership with our parent body.

Class numbers are small, and a well-balanced programme exists to meet the needs of every student's barrier(s) to learning. Jewish values form the basis for every aspect of learning and we encourage respect, tolerance and understanding of all other faiths and cultures.

Our aim is for King David Ariel to instil confidence in our students, build strong character traits and inculcate a deep connection to our community. It is a privilege to lead this magnificent school.

ACADEMICS



**We strive to equip our students
with the strategies and skills needed
to navigate their way through life.**



Our education model compliments both the secular and Jewish domains in an atmosphere that develops grit, resilience and confidence.



Even though we are aligned to the King David curriculum expectations, our focus is to address the learning barriers presented by our students as well as to equip them to enter a mainstream environment with confidence.

We are proud of our differentiated curriculum, where the holistic needs of all our students are considered. Our academic curriculum is complemented by various programmes and initiatives which facilitate growth in our students.

These include but are not limited to:

- **RAVE-O**
- **Get Reading Right**
- **Thinking Maps**
- **Thinking and Creating (TAC)**
- **V&V (Visualisation and Verbalisation)**
- **Coding and Robotics**



To ensure that no stone is left un-turned we schedule termly teacher/therapist connect meetings where the academic and therapeutic aims of every student discussed as a team. Our academic programmes are designed to differentiate the curriculum according to the needs of our students, therefore, allowing every individual to grow and develop.



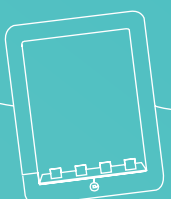
21st CENTURY LEARNING

We encourage every child at King David Ariel to be computer literate & competent. In addition, all our students learn the basic skills of coding, design, logic, and collaboration to further develop their problem-solving skills.

We accommodate the students at our school who require technology to assist them to reach their full potential and to provide them with alternate methods of learning.

In the Foundation Phase, our teachers use Blue-Bot technology to enrich the curriculum and develop students' confidence in using 21st century technology. Blue-Bot is a robot that can be programmed in a variety of ways providing children with a means of creating their own logical programming sequences in a fun and interesting way.

In the Senior Primary, the students are taught coding using Cubroid technology. Cubroid is a global leading artificial intelligence (AI) and educational robotics company. The students use these specialised blocks to bring creations to life by using coding movement, sensors, song, and LED lighting.



JUDAICA

As a Jewish learning community, King David Ariel inspires our learners to be competent, responsible, and knowledgeable, as well as active members of the greater community. Learning is a collaborative effort involving children, parents, and educators.

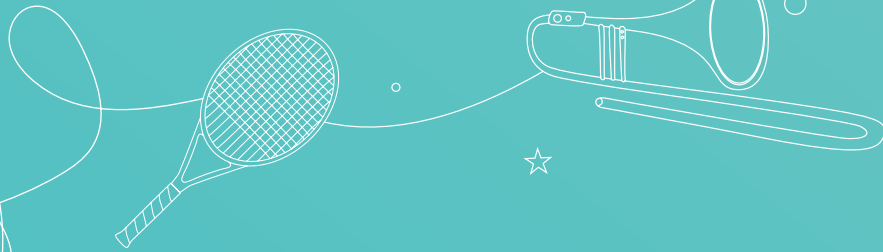
Each student is treated individually and provided with a Jewish education that meets their learning needs. We adapt our Hebrew classes to each individual student's level and create an exciting and safe environment for everyone.

Our Jewish Studies programme is integrated throughout the curriculum to encourage the development of a healthy, self-assured Jewish identity.

The development of positive personality traits (character) is integral to our ethos. Regular davening (prayers), learning of the Torah, celebration of the chaggim (Jewish festivals) and a focus on Middos (positive character traits) are at the core of our Jewish studies and Hebrew curriculum.



SPORT & EXTRA MURALS



King David Ariel recognizes the importance of sports in a child's education. Besides offering physical fitness and holistic health benefits, sport is also a wonderful avenue for building self-confidence, teamwork, social skills, and resilience.

As part of our sports philosophy, all children have the opportunity to compete.

We strive to instil the following values in our children regardless of their sporting ability.

- **Self-esteem & confidence**
- **The importance of teamwork & collaboration**
- **Fair play**
- **To always do one's best (Resilience)**
- **Promoting good sportsmanship (to win or lose with dignity)**

The following sports are offered during the year in collaboration with King David Primary School Victory Park:

- | | |
|--|------------------------------------|
| • Soccer and Mini Soccer (Boys & Girls) | • Athletics |
| • Netball and Mini Netball | • Cross Country |
| • Cricket and Mini Cricket | • Table Tennis |
| • Chess | • Tennis (Boys & Girls) |
| • Swimming | • Rugby (Senior Boys) |
| | • Touch Rugby |

The following extra-mural activities are offered in collaboration with King David Primary School Victory Park:

- | | |
|--------------------------|--------------------------|
| • Chess | • Marimba Band |
| • Coding | • Art |
| • Robotics | • Pottery |
| • Musical Theatre | • Choir |
| • Music | • Public Speaking |



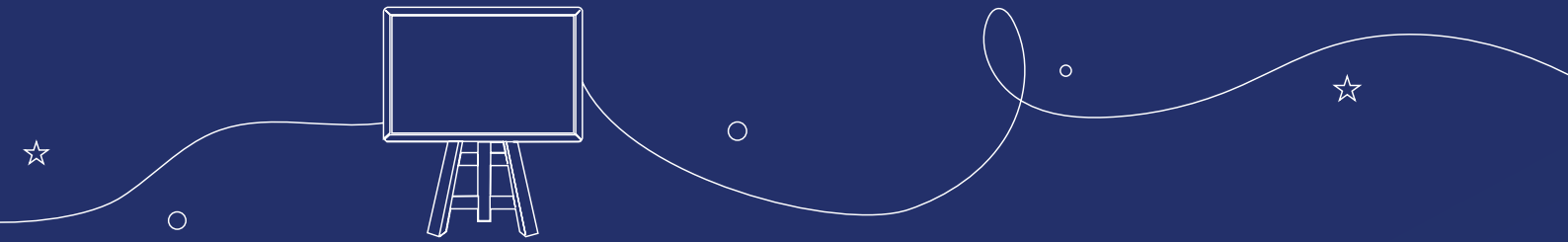


THERAPIES

King David Ariel has a multi-disciplinary team of therapists consisting of Remedial Therapists, Speech-Language Therapists, Occupational Therapists, Neuro-Developmental Physiotherapist, and Educational Psychologists. Therapists work collaboratively with the teachers to facilitate the transition of skills. All therapy occurs either individually, in small groups and in the classroom environment.

Therapies offered:

- *Speech and Language Therapy*
- *Occupational Therapy*
- *Remedial Therapy*
- *NDT Physiotherapy (privately)*
- *Play Therapy*
- *Dyslexia Therapy*
- *Interactive Metronome*
- *Visual Therapy*
- *Rave O*



Speech & Language Therapy

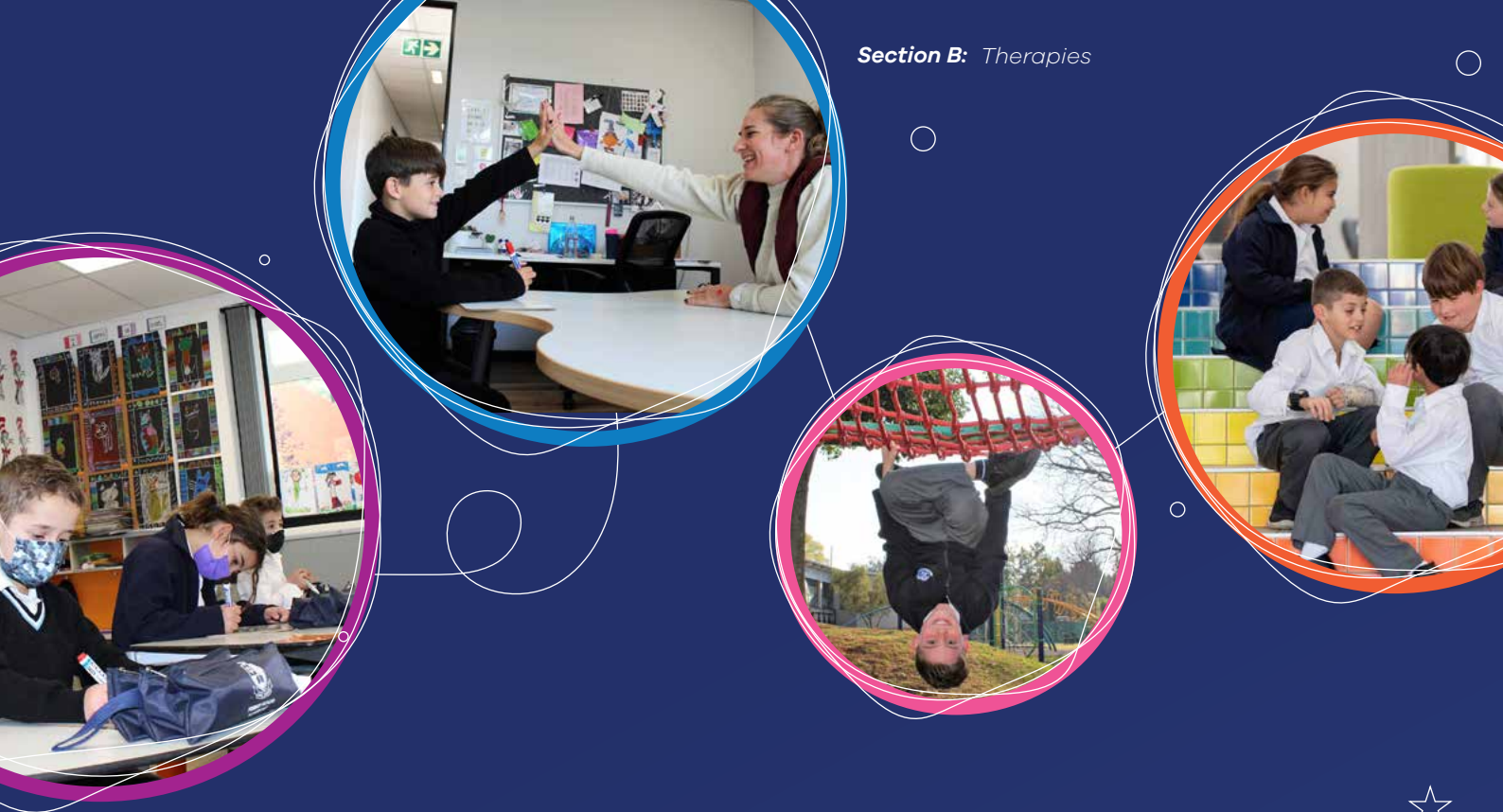
King David Ariel's Speech and Language team consists of three full-time Speech and Language Therapists. Their areas of special interest include Central Auditory Processing Disorder, Apraxia of Speech, Dyslexia, Articulation, and Pre-literacy skills. The Foundation Phase partake in specialized reading remediation programmes including, **Get Reading Right** (A multi-sensory and fun reading and phonics program) and **RAVE-O** (A reading recovery programme that helps students to achieve an overall increase in reading ability). Speech classes have been introduced to improve listening, processing, and language skills. Students are introduced to the **Visualizing and Verbalizing Programme (VV)** to develop written language, comprehension and higher order thinking skills. In keeping up with the most recent treatment for CAPD, (Central Auditory Processing Disorder) the **Acoustic Pioneer Programme** has recently been implemented to assess and treat CAPD. Our Speech Therapists have been trained in the **SGDA** (Stark Griffin Dyslexia Assessment and Therapy Programme) to assess and treat learners with dyslexia.

Occupational Therapy

King David Ariel has two full-time Sensory Integration trained Occupational Therapists. In a school setting, Occupational Therapy focusses on the development and mastery of skills related to academic performance such as fine motor and gross motor skill acquisition, visual perceptual development, sensory motor development and the development of higher order skills such as executive functioning. Weekly Occupational Therapy classes are provided in the Foundation Phase with the focus on application and integration of therapeutic skills. Also offered at King David Ariel is the **Interactive Metronome (IM)** programme, which is a training programme that assists children to cope with coordination, memory and attention difficulties. It works on the body and mind simultaneously in a motivating and engaging way to improve the critical timing skills that underlie all our human capabilities.

Remedial Therapy

King David Ariel's Remedial Department consists of four full-time Remedial Therapists who work together with the teachers to bridge academic gaps and to assist teachers with differentiated teaching. Therapy focuses on various aspects of learning, depending on the grade level and needs of the learners. Skills that are mostly focused on include: reading, spelling, writing skills, comprehension and language skills, vocabulary development and foundation mathematics skills. Some of the support offered by the Remedial Therapists include **TAC** (Thinking and Creating skills), **Study Skills /Thinking Maps**, **RAVE-O**, **Dyslexia Therapy** and **Extension Lessons** (focus on applying critical thinking skills to both English and Maths). In the Senior Phase, there are class splits where students needing more support attend a weekly class comprehension, writing and maths lessons in a small group with an allocated remedial therapist during these class lessons. In **Word Works**, a weekly spelling and phonics lesson, the grade is split between the class teachers and relevant remedial therapist. Typically, the remedial therapist would take the weakest group and work on spelling skills targeted at their specific needs.



Neurodevelopmental Physiotherapy (NDT Physiotherapy)

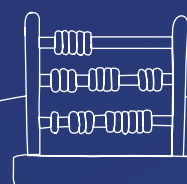
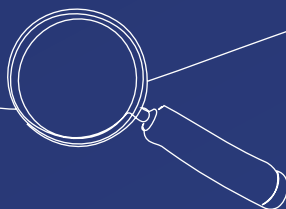
King David Ariel has a part-time NDT Physiotherapist whose focus is on the assessment and treatment of children with any form of motor delay, however mild or severe. In a school like King David Ariel, this usually involves difficulties with motor coordination, clumsiness or inefficient desk posture which can cause fine motor coordination problems. The NDT Physiotherapist's main aim is to improve the quality and efficiency of the child's movement with the emphasis on creating a stable yet dynamic base of support. This improves not only their posture and endurance at the desk, but also during everyday activities.

Visual Therapy

Visual Therapy is offered during the school day by a Behavioural Optometrist in Private Practice. Visual Therapy is a sequence of eye exercises that are used to improve the quality and efficiency of vision. Therapy helps the eyes work more efficiently to perform daily tasks like reading and writing more efficiently.

Psychological intervention

King David Ariel has two Educational Psychologists who provide a range of short-term school-based support services offered during the school day. The role of the Psychologist is to support children in their academic learning as well as their emotional and social development within the context of the school.



Play Therapy

Short-term play therapy is provided for individual children requiring a safe, supportive space to express their emotions and process their experiences. Generally, play therapy is suitable for younger children who may find playing to be an easier means of expressing their emotions and concerns than talking.

Individual Counselling

Individual counselling is provided on a short-term basis for issues that are affecting the child's academic learning, emotional wellbeing, and social functioning.

Crisis Intervention

The Educational Psychologist is often required to provide immediate, unscheduled support services to a child or children in need.

Emotional Awareness & Social Skills Training

The Educational Psychologist provides classroom-based lessons on topics such as mindfulness, emotional awareness, self-esteem, friendship skills, resilience, stress management and conflict resolution. These topics are selected according to the needs of the class group at the time. The broad aim is to raise self-awareness, increase emotional intelligence and improve social skills.

Small Group Intervention

At times, the Educational Psychologist may see a small group of children who are needing mediation and assistance in addressing interpersonal issues and social dynamics occurring within that group.

Assessment

Our Educational Psychologists conduct psycho-educational assessments as and when these are required for existing learners at King David Ariel; for example, if there are concerns about a child's rate of progress or as part of the process of considering a child's readiness to mainstream.

Parent Support

King David Ariel parents are invited to attend a support group run by the Clinical Director and Educational Psychologist. The aim of these groups is to provide a safe, supportive and collaborative space in which to share common concerns and problem-solve.

Regulation station & Snoezelen room

A regulation station has been set up to assist children to self-regulate on an emotional and sensory level. This station is a therapeutic sensory environment that addresses all sensory systems to help with modulation and self-organization. The station has a cocoon swing, a rebound punching bag, a massive vibrating cushion, a tactile wall, MP3 players with calming music and a sensory tent. The Snoezelen room, a multi-sensory environment is used by the Educational Psychologist to optimize emotional regulation and help reduce anxiety.



**Contact us today
to chat to our team
and arrange a tour.**

For more information or to arrange
a personalised tour of King David Ariel:

King David Ariel

Admissions: Belinda Urdang – 011 446 7877

Email: kdariel@sabje.co.za

www.kingdavid.org.za

